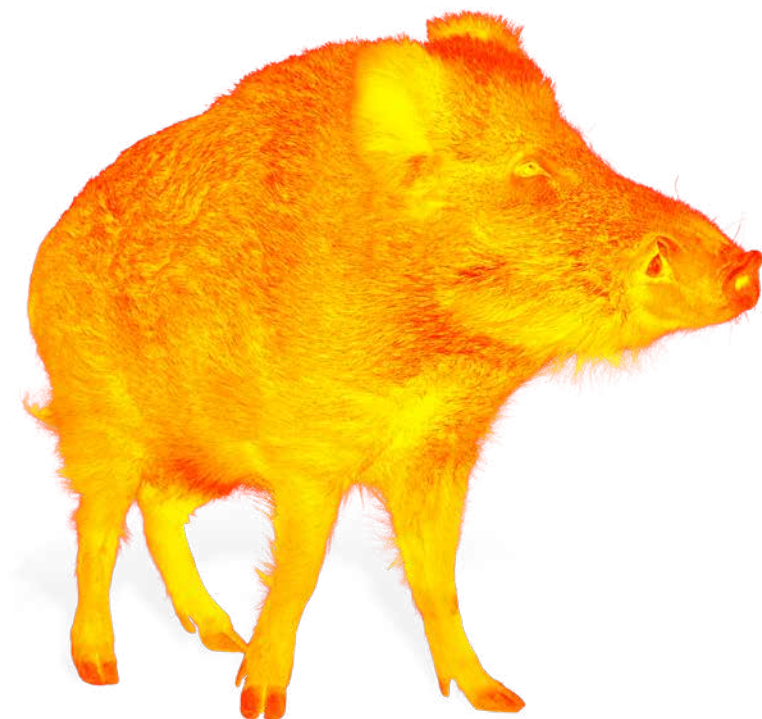


LIEMKE



LIEMKE

LEADING IN IMAGE QUALITY

CATALOG 2024

INNOVATION. QUALITY. SERVICE.
by LIEMKE

WHY LIEMKE?

We at LIEMKE develop and produce premium thermal imaging devices – Made in Germany. Quality and service meet the highest standards without exception. Whether you are a stalker, forest or field hunter – at LIEMKE you will find high-precision thermal imaging optics tailored to your requirements and conditions in the field.



MADE IN
GERMANY



QUALITY THAT CONVINCES

LIEMKE thermal imaging optics are known for their outstanding image sharpness and detail reproduction, realized by powerful detectors and high-quality image processing software. Depending on the requirements of the hunting ground, hand-held devices and attachments are available in various combinations of range and field of view.



WITH THE UTMOST CARE AND RELIABLE SERVICE

LIEMKE thermal imaging optics are Made in Germany, designed and manufactured in Germany! Decades of optical expertise, high-quality materials and high-end technologies speak in favor of our products, which is why we offer you a guarantee of up to 3 years. Absolutely unique: our service promise. You send your product to us – we guarantee a turnaround time of one week in the factory.



PROVEN ON HUNTS

Our LIEMKE developers know what is important: highest image quality, compact and robust design, intuitive operation, long-lasting performance, fast operational readiness. These and other sophisticated features make our thermal imaging optics your reliable companions in the field!

SUPERIOR IMAGE QUALITY

The five color modes allow you to use the camera in any weather – according to your individual preferences. The two image modes “Sun” and “Rain” ensure optimum detail reproduction in different conditions thanks to contrast equalisation. Applies to the thermal imaging devices of the LUCHS and KEILER families.

COLOR MODE

Choose between five different color modes – according to your requirements!

If you only want to use two or three color modes, it can be annoying to always have to switch through all of them. For this reason, unused color modes can be deactivated in the submenu. This allows you to easily switch between your favorites.



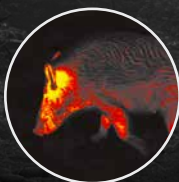
White Hot: For precise identification of the target at night. The target is displayed brighter while the background is dark.



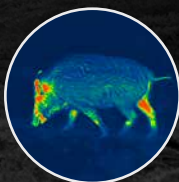
Black Hot: Provides a visual impression similar to daylight, with a dark target on a light background.



Extra Dark: Based on the White Hot mode with lower overall brightness and a warmer color tone, ideal for protecting the eye's natural night vision.



Red Hot: For particularly fast detection of heat sources.

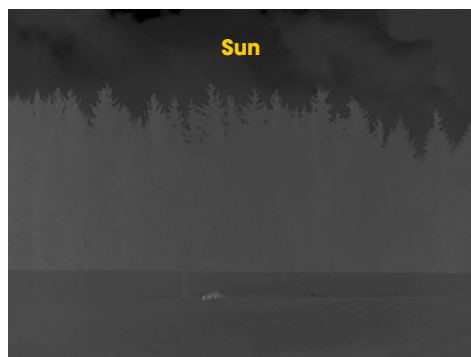


Rainbow: For displaying the smallest temperature differences.

IMAGE MODE

Different scenes can have different contrasts. In both very high-contrast and very low-contrast landscapes, e.g. in strong sunlight or rain, optimum detail reproduction is not possible with a single setting of the device.

Instead of accepting unsatisfactory compromises or having to make complex adjustments to contrast and sharpness via the menu, the devices in the LUCHS and KEILER family offer a practical solution: two easily switchable image modes for optimum detail reproduction in different weather conditions.



In scenes such as the landscape shown here in prolonged rainy weather, the temperature differences are very small and therefore the contrast is low. Here, the **"Rain"** mode helps to make the structures in the landscape more visible by intelligently increasing the contrast, thus enabling better orientation in the terrain.

The **"Sun"** image mode faithfully reproduces the image under normal ambient conditions. Image areas with high temperature differences, e.g. the observed game, are depicted in great detail so that you can respond with confidence.

THERMAL IMAGING OPTICS








RECOMMENDED USE

Detection ranges








FOREST

FOREST / FIELD

ADDITIONAL DEVICE

LUCHS-2	  	
LUCHS-1	 	
LUCHS-25.1	 	1,250 m

HAND TOOL

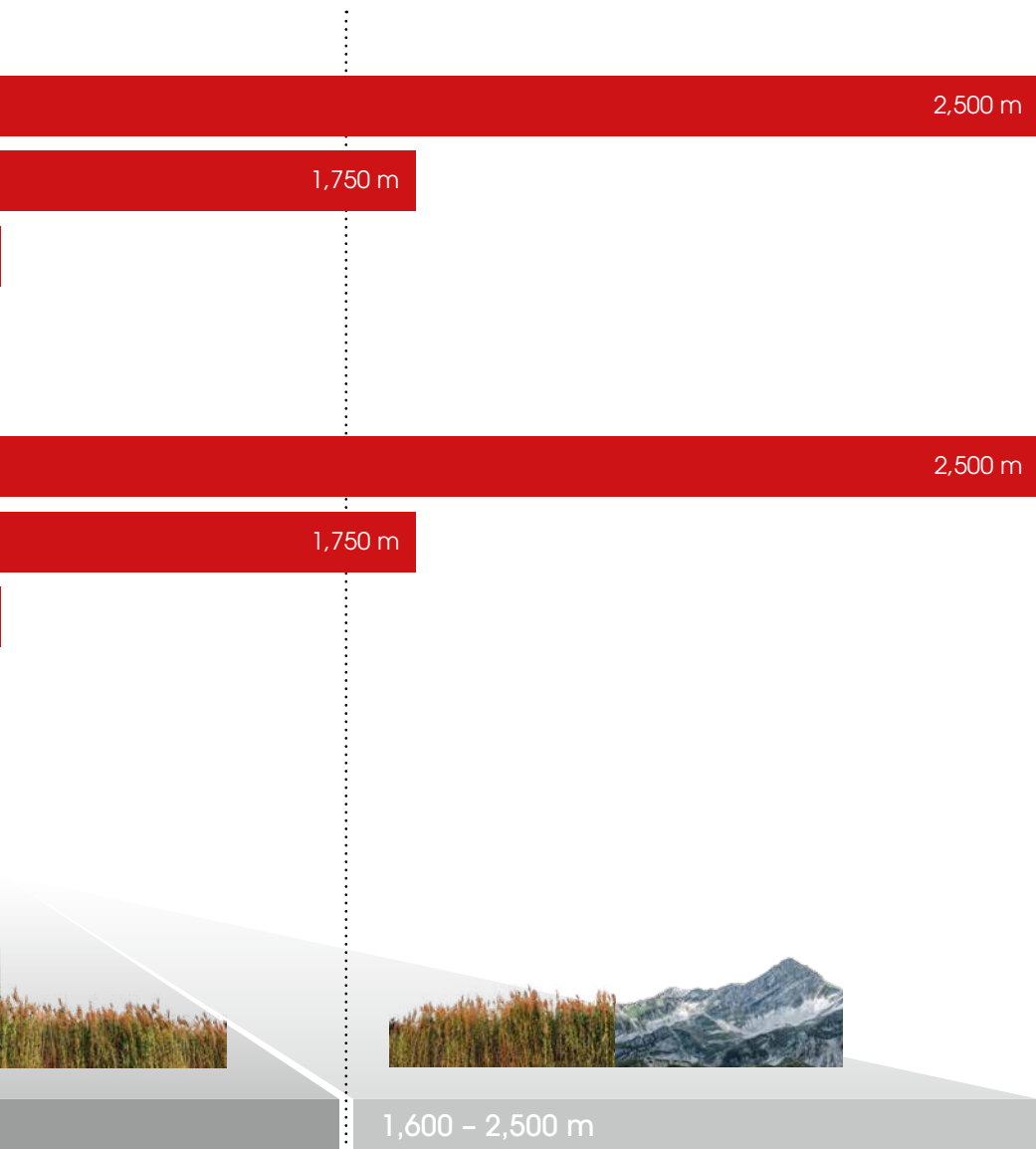
KEILER-2	  	
KEILER-1	 	
KEILER-25.1	 	1,250 m



0 – 800 m

800 – 1,600 m

FIELD / MOUNTAIN





LUCHS

FAMILY

LUCHS-2



LUCHS-1



NEW

LUCHS-25.1



MADE IN
GERMANY



A GOOD VIEW AT NIGHT!

It is fast, silent and its eyes are six times more sensitive to light than those of a human. This means it can not only see its prey at dusk, but also recognize it at long distances in complete darkness: the lynx.

We have utilized precisely these properties for the LIEMKE attachment optics. Experience the darkness through the eyes of the nocturnal hunter and keep a good view at night – with the LIEMKE LUCHS family.

The unique combination of a large field of view and long range with unrivalled image quality makes the LIEMKE LUCHS family of thermal imaging attachments unrivalled in the premium segment.

Thanks to their compact design, long battery life and intuitive operation, the LUCHS attachment optics set new quality standards in practical use. Whether LUCHS-2, LUCHS-1 or LUCHS-25.1 – every member of the LUCHS family is “Made in Germany” – developed and manufactured in Germany.



More information at:
www.liemke.com

LUCHS-FAMILY

MADE IN
GERMANY

VERSATILE APPLICATION OPTIONS

The perfect combination of a powerful sensor and matching objective lens for maximum precision in the forest and field – depending on the type of hunt and hunting ground conditions!

FAST & INTUITIVE OPERATION

The LIEMKE LUCHS family offers a flexible operating concept with three operating modes:

Standard: Preset

Basis: Limited to essential functions

Individuell: Configurable for the technically interested user.

Memory positions are available for customization to three different weapons / optics.



Illustration shows LUCHS -2
with 50 mm objective lens.

THREE-POSITION SWITCH

With a start-up time of just 5 seconds, the appliance is immediately ready for use. The visible and tactile mechanical switch ensures quick and intuitive operation: OFF / standby / ON



PERSISTENT PERFORMANCE

All three LUCHS models have a built-in rechargeable battery with a runtime of up to 9 hours.



MULTIMEDIAL CONNECTIVITY

With integrated WiFi function for live streaming, photo and video recording via app and USB-C connection. In addition, a 32 GB internal memory allows you to capture your hunting experiences.



WiFi



Photos



Videos



Live streaming

32

GB memory



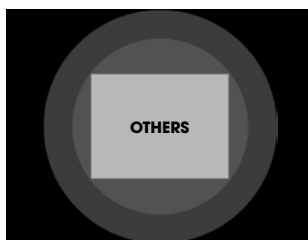
USB-C

ROBUST CONSTRUCTION

All LUCHS attachments are designed to meet the same shock resistance requirements as premium riflescopes. Even rain, dust and temperatures between -20 °C and +50 °C cannot harm the optical attachments.

POWERFUL COMBINATION

Thanks to their combination of field of view and range, the devices in the LUCHS family qualify for different areas of application: The LUCHS-1, for example, impresses with its unique and extremely powerful combination of a generous field of view of 22 meters at 100 meters and a range of 1,750 meters. As a result, the image of the riflescope is completely filled in width even at low magnification.



More overview: Compared to the attachments of other manufacturers, the LUCHS-1 fills the image of the riflescope even at low, approx. 2x initial magnification fully utilized.

A close-up photograph of a man with a beard and a hat, looking through a Zeiss rifle scope. The rifle is mounted on a mossy rock. The background is a blurred forest.

“IMAGE QUALITY AND
CONTOUR SHARPNESS
ARE UNBEATABLE
IN MY EYES.”

Felix Seitz
(27 years, passionate hunter)

MADE IN
GERMANY





The tactile three-position switch enables quick and intuitive operation in the field.

"Made in Germany" – top quality and reliable service.

LIEMKE-thermal imaging devices are characterized by first-class image quality and exceptional workmanship.



RECOMMENDED USE

The LUCHS models differ in the lens/sensor parameters with otherwise identical functions. The resulting differences in field of view and range are decisive for their range of use depending on the hunting ground conditions.



NEW

LUCHS-2

The long-range specialist for hunting on extensive grounds.



Sensor
640x512
Pixel

LUCHS-1

The premium all-rounder for forest and field hunting on mixed terrain.



Sensor
640x512
Pixel

LUCHS-25.1

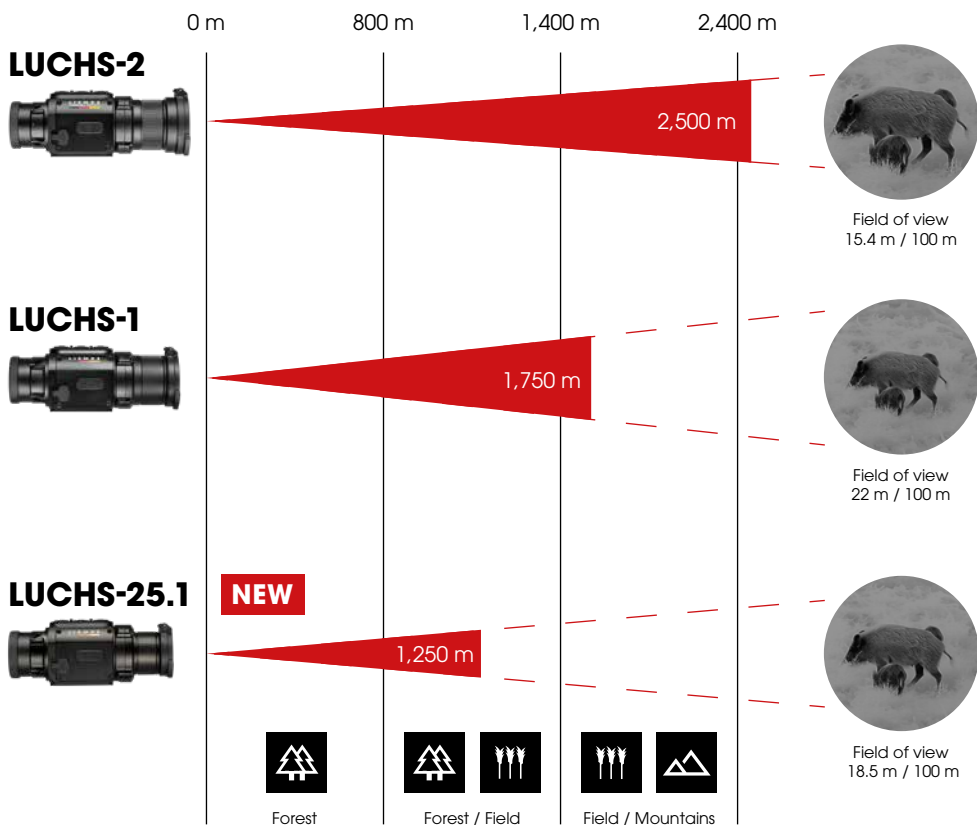
The universal companion for stalking and hunting in forest and field.



Sensor
384x288
Pixel

RANGE, FIELD OF VIEW AND MAGNIFICATION

All-rounder or specialist? The conditions on the hunting ground define the demands on the optical attachment. Decisive: detection range, field of view and magnification.



SCOPE OF DELIVERY

LUCHS-FAMILY



- LUCHS clip-on thermal imaging camera
- Lens cap (mounted)
- Thread protector with rubberized eyecup (mounted)
- USB-C cable
- Power supply unit with USB-C connection and 4 plug adapters
- Europe (Type C)
- UK (Type G)
- US (Type A)
- OFF (Type I)
- Thread adapter M43x0.75 to M52x0.75 with locking ring
- Hook spanner for thread adapter
- Optics cleaning cloth
- Operating instructions

LUCHS-FAMILY TECHNICAL DATA

NEW

MODEL	LUCHS-2	LUCHS-1	LUCHS-25.1
Detector and optics			
Objective lens	50 mm / f1.0	35 mm / f1.0	25 mm / f1.0
Field of view	15.4x12.3 m / 100 m	22x17.6 m / 100 m	18.5x13.9 m / 100 m
Sensor (resolution and type)	640x512 VOx Micro-bolometer uncooled	640x512 VOx Micro-bolometer uncooled	384x288 VOx Micro-bolometer uncooled
Pixel Pitch	12 µm	12 µm	12 µm
Pixel field of view/PFOV	0.24 mrad	0.34 mrad	0.48 mrad
Image frequency	50 Hz		
NETD	50 mK	50 mK	40 mK
Magnification	1x (2x direct zoom available)		
Detection range	2,500 m	1,750 m	1,250 m
Display	1.024x768 OLED colour display		
Functions and media			
Internal memory	WiFi / 32 GB internal memory		
Battery runtime	integrated, up to 9 hours running time		integrated, up to 10 hours running time
External power supply	USB-C		
Physical and environmental characteristics			
Size	171x64x65 mm	161x64x65 mm	156x64x65 mm
Weight	625 g	580 g	580 g
Waterproof	IP67		
Usage temperature	-20°C bis +50°C		
Connection thread	M43x0.75		

LIEMKE ACCESSORIES

BLASER CLIP-ON DEVICES

A reliable connection with the riflescope is of great importance for a constant point of impact when hunting with thermal imaging optics.

The Blaser clip-on devices guarantee such a connection: they are easy to handle, quick to mount and absolutely repeatable in use. While the BL clip-on devices are convincing in combination with the B1 and B2 driven hunt riflescopes, the CM clip-on devices score with their compatibility with the Blaser Flip Cover, which can remain folded out on the riflescope when using an attachment optic.



The picture shows a Blaser B2 1.7-10x42 IC with CM 46 clip-on device and LIEMKE LUCHS-2.



LIEMKE CLAMPING ADAPTER

The LIEMKE CM clamping adapter has a very low profile and enables the precise and stable clamping of attachments to daylight optics. The wide, rubber-coated inner surface of the clamping adapter ensures a stable fit and at the same time protects the coating of the daylight optics. The CM clamping adapter is available in various sizes from 30 to 65 mm.

LIEMKE FFL

The FFL (Fast Focus Lever) allows you to focus quickly and easily with your LUCHS thermal imaging device without having to encompass the entire lens. The stops give you the safety, always in a practical context focus area. Suitable for LUCHS-2 and LUCHS-1.





KEILER FAMILY

KEILER-2



KEILER-1



NEW

KEILER-25.1



MADE IN
GERMANY



THE NIGHT AT HAND

The premium hand-held appliances from LIEMKE – small, compact and powerful!

The thermal imaging optics in the KEILER family combine excellent image quality with intuitive handling. Thanks to their small format, they can be operated with one hand and easily stowed in any jacket pocket. Small but powerful: thanks to precise sensors and sophisticated image processing software, natural-looking images are created that make even the smallest details clearly recognizable. High-quality materials and reliable workmanship enable use in all weather conditions. From the generalist in the field and forest to the range specialist for use in wide-ranging scenarios: comfortable observation by day and night with maximum precision in pocket format!



More information at:
www.liemke.com

KEILER-FAMILY

MADE IN
GERMANY

FLEXIBLE, AMBIDEXTROUS USE

For a secure grip: A hand strap, to which the neck strap can be attached at the same time, allows easy and secure handling, both with the left and right hand. Equipped for every hunting situation!

COMPACT AND ROBUST

Only the best: Robust aluminium housing for the lens, eyepiece unit and frame, a fiberglass-reinforced plastic body and rubber inserts make use possible even under the most adverse conditions! Even survives short dives*!

*30 min at 1 m water depth



BRILLIANT IMAGE



Brilliant image thanks to high-resolution sensors – depending on the model. The sophisticated image processing software and the two quickly switchable image modes for sun/rain ensure a natural-looking image with excellent detail recognition in different weather conditions. Five color modes allow you to use the camera according to your individual preferences.

Further details on color and picture modes on pages 4 / 5.



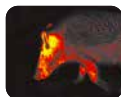
White Hot



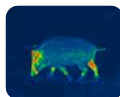
Black Hot



Extra Dark



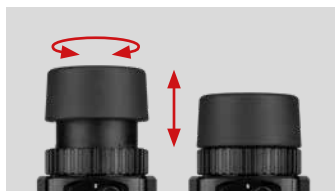
Red Hot



Rainbow

COMFORTABLE - EVEN WITH GLASSES

Keep an overview at all times: The eyecup can be adjusted for use with or without glasses – with a full field of view. A further advantage: even in difficult situations, unrestricted observation is possible because the distance to the eye can be changed to adapt to the user.



LONG-LASTING EXCHANGEABLE BATTERY

The battery offers a runtime of up to ten hours and can be recharged within three hours thanks to the quick-charging function via USB-C. Thanks to the bayonet catch, the battery can be changed quickly and silently. Add-on: The CHARGER-K – available as an accessory – can also be used as a power bank!

Illustration shows KEILER-1
with 35 mm objective lens.



MULTIMEDIA CONNECTIVITY

The KEILER family of hand-held devices can be easily connected to the LIEMKE app using its WiFi function. Images and videos can also be conveniently saved for future viewing.



WiFi



Photos



Videos



Live streaming

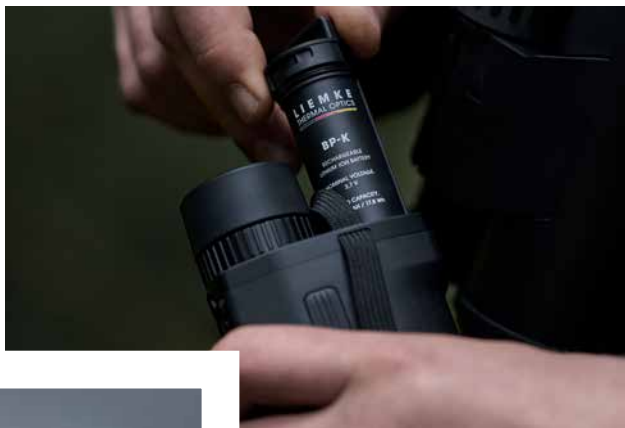
32

GB memory



USB-C

The battery of the KEILER thermal imaging devices can be changed quickly and silently thanks to the bayonet connection.



The eyecup is adjustable for use with or without glasses.

The all-round wrist strap ensures that it can be used with both the left and right hand.



"IDENTIFYING GAME
HAS NEVER BEEN SO
RICH IN DETAIL."

MADE IN
GERMANY



INTUITIVE TO USE AND INDIVIDUALLY ADJUSTABLE

Simple and clear operability thanks to excellent ergonomics even in complete darkness! The main control element is the centrally placed scroll wheel: This can be used to intuitively navigate the menu, zoom and other functions. The menu navigation can also be customized. You can choose between standard, custom and basic mode as well as a quick menu. This allows you to quickly and easily access frequently used functions and switch between your favorite display types in no time at all!



MADE IN
GERMANY

KEILER-FAMILY TECHNICAL DATA

NEW

MODEL	KEILER-2	KEILER-1	KEILER-25.1
Detector and optics			
Objective lens	50 mm / f1.1	35 mm / f1.0	25 mm / f1.0
Field of view	15.4x12.3 m / 100 m -8.8x7.0°	22x17.6 m / 100 m -12.5°x10.0°	18.5x13.9 m / 100 m -10.5°x8°
Sensor (resolution and type)	640x512 VOx	640x512 VOx	384x288 VOx
Pixel Pitch	12 µm		
Pixel field of view / PFOV	0.24 mrad	0.34 mrad	0.48 mrad
Detection range	2,500 m	1,750 m	1,250 m
Image frequency	50 Hz		
NETD	50 mK	50 mK	40 mK
Magnification	2.7x basic magnification (digital zoom up to 14.0x)	1.9x basic magnification (digital zoom up to 10.0x)	2.4x basic magnification (digital zoom up to 10.0x)
Focussing range	1 m to infinity		
Display	1.024x768 px OLED		
Functions and media			
Internal memory	32 GB		
WiFi and app compatibility	yes		
Battery runtime	up to 9 h		up to 10 h
Physical and environmental characteristics			
Size	163x75x55,5 mm	158x72x47 mm	147x72x47 mm
Weigth	510 g	465 g	445 g
Waterproof	IP67 (dustproof / waterproof for brief immersion)		
Usage temperature	-20 °C bis +50 °C / -40 °C bis +70 °C		

RECOMMENDED USE

Same functions and features, different ranges, sensors and lenses. Which device from the KEILER family is the right one depends very much on the conditions on the hunting ground.



KEILER-2

The long-range specialist for field and mountain hunting on extensive terrain.



Sensor
640x512
Pixel

KEILER-1

The premium all-rounder for field and forest hunting on mixed terrain.



Sensor
640x512
Pixel

NEW

KEILER-25.1

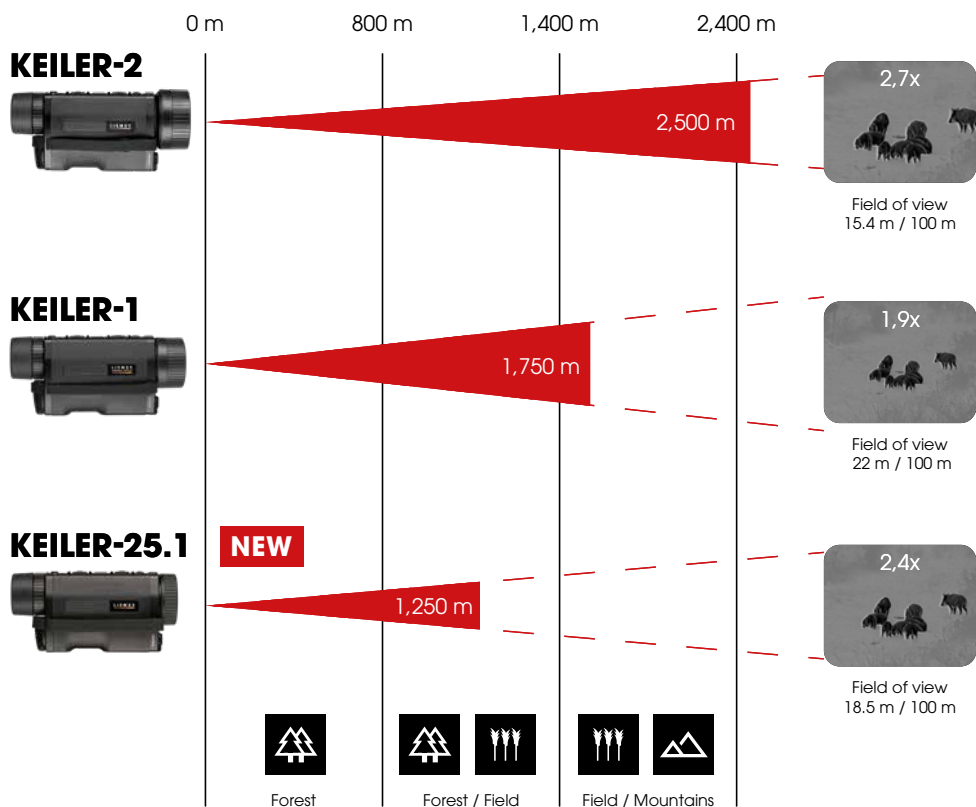
The generalist for stalking and stand hunting in field and forest.



Sensor
384x288
Pixel

RANGE, FIELD OF VIEW AND MAGNIFICATION

Relevant parameters for hunting practice in comparison.



SCOPE OF DELIVERY KEILER-FAMILY



- LIEMKE KEILER thermal imaging camera with wrist strap
- 1x LIEMKE BP-K Li-Ion rechargeable battery
- Slim shoulder strap
- Neoprene cover
- Tripod adapter plate with screws and angle spanner
- Power supply unit with USB-C connection and 4 plug adapters
- Europe (Type C)
- UK (Type G)
- US (Type A)
- OFF (Type I)
- USB-C to USB-A cable (charging/data transfer)
- Optics cleaning cloth
- Operating instructions
- Adapter for LIEMKE carrying straps

LIEMKE ACCESSORIES KEILER-FAMILY



LIEMKE Flip Cover KEILER M & L

Protective lens cap with adapter ring for screwing in. Protects the objective lens from dust, dirt and moisture.



LIEMKE carrying strap

The LIEMKE shoulder straps impress with their functional design and maximum comfort. Thanks to two length-adjustable loops, the neck strap can be customized. Lightly padded.

Material: neoprene.
Available in black and orange.





LIEMKE CHARGER-K

Charger for two BP-K Li-Ion batteries with quick-charging function. Can also be used as a power bank.

Batteries are not included.



LIEMKE BP-K battery pack

BP-K Li-Ion battery for KEILER family with bayonet lock as additional exchangeable battery.



LIEMKE MULTIRAIL



The LIEMKE Multirail with the SIG SAUER BRAVO3 prism riflescope and a LIEMKE attachment provides a uniquely compact solution for night hunting.

This combination really comes into its own with the LUCHS-1. The field of view of the BRAVO3 is over 30 % larger than that of conventional scopes and is completely filled by the thermal image of the LUCHS-1. At 335 mm, the combination is considerably shorter than other solutions and the attachment can be removed at any time using a quick-release connector.



LIEMKE Multirail BLASER with SIG SAUER BRAVO3 and LUCHS-1.



COMPACT

With an overall length of just 335 mm, the combination of BRAVO3 and LUCHS-1 is roughly as long as a conventional riflescope without an attachment.

30 % LARGER FIELD OF VIEW

The field of view of the BRAVO3 is over 30 % larger than that of conventional riflescopes and is completely filled by the thermal image of the LUCHS-1.

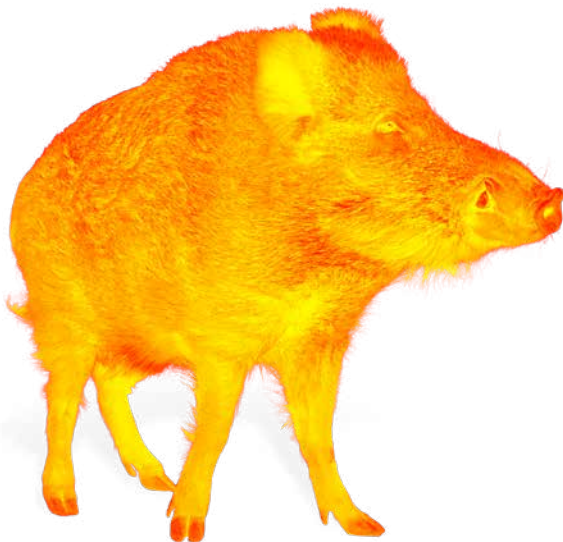


100 % REPEATABLE

The **LIEMKE Multirail Blaser** is quickly removable and can be mounted with repeatable accuracy. The attachment mounted on the quick connector allows convenient use of the attachment for observation.

LIEMKE Multirail Picatinny
with SIG SAUER BRAVO3 and LUCHS-1.

LIEMKE



LIEMKE GmbH & Co. KG

Ziegelstadel 1
D-88316 Isny
Germany

+49 (0) 7562 6189472
office@liemke.com
www.liemke.com



LIEMKE - CATALOG: EN · 01 / 2024

We reserve the right to make changes to the construction, design, version and scope of delivery.
No guarantee for possible errors.

Observe the legal conditions of purchase and use for thermal imaging optics
in your country or federal state.